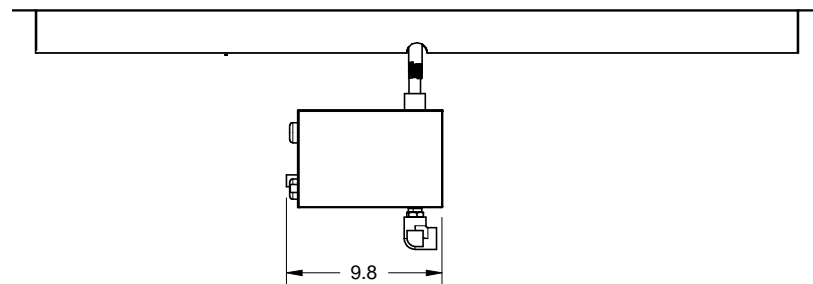
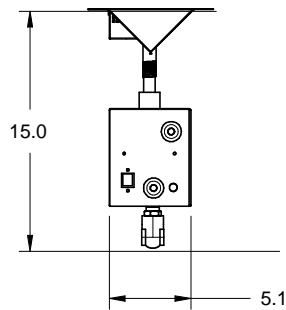
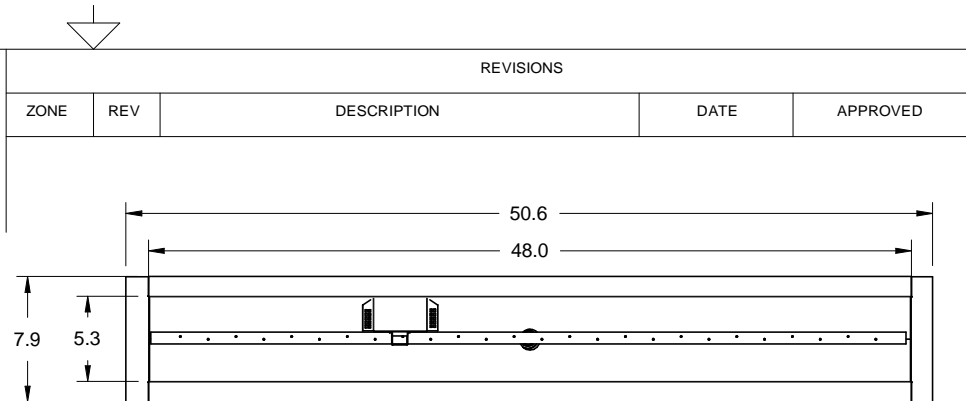



Click on Image to View in 3D



It is recommended to recess the lip of the pan.

Materials: Pan, Burner, and Valve Box Are All 304 Stainless Steel Construction  Overall Height = +- 2.0 Depending on Configuration	DRAWN	DATE	<b>48SSHWI-TRGH</b>   <b>Hearth Products Controls Co</b>		
	Mike Adkins	3/29/2010			
	CHECKED		SIZE	FSCM NO.	DWG NO.
	QA		A		48SSHWI-TRGH
	MFG		SCALE		REV
	APPROVED				SHEET